

Asbestos Register Management System ("ARMS")

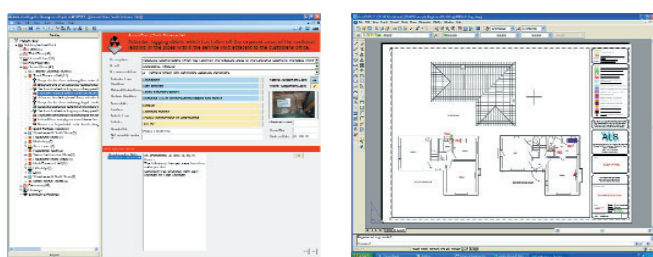
The duty to manage asbestos in premises is an ongoing requirement under the Control of Asbestos Regulations 2006. The duty holder must ensure that asbestos containing materials (ACMs) within premises are effectively managed.

The first step of the management process is to undertake an asbestos risk assessment survey, thus obtaining a detailed register of asbestos containing materials within the building.

The second step is to deliver this asbestos register direct to the relevant duty holders in a convenient & straightforward manner.

This is where ARMS comes in.

The system has been developed alongside our clients over a number of years to ensure a user-friendly, cost effective and, updateable database system to manage your asbestos risk assessments.



- Password protection & user log for security on networks
- MDHS 100 compliant
- Digital photographs
- AutoCAD drawings

The third step of the process is to manage and maintain the asbestos within your buildings and to this end, ARMS not only acts as a front line management database, it also helps you to fulfil the HSE requirement of re-inspecting ACMs on an annual basis.

With ARMS and the integrated Pocket PC Module, the re-inspection process is very straightforward, accurate and time efficient. The Pocket PC module enables a surveyor to revisit a site with all the ACM data conveniently available and to record any changes in the data source, saving valuable reporting time and ensuring maximum accuracy.

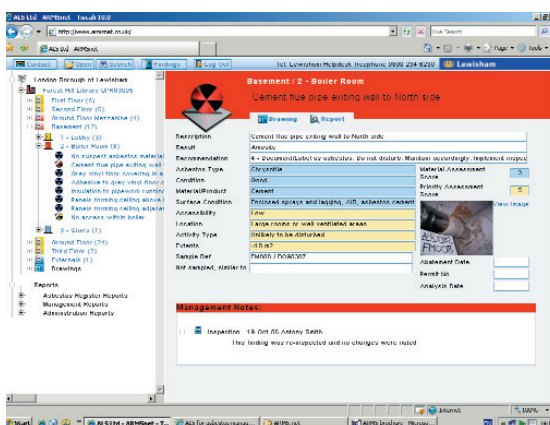
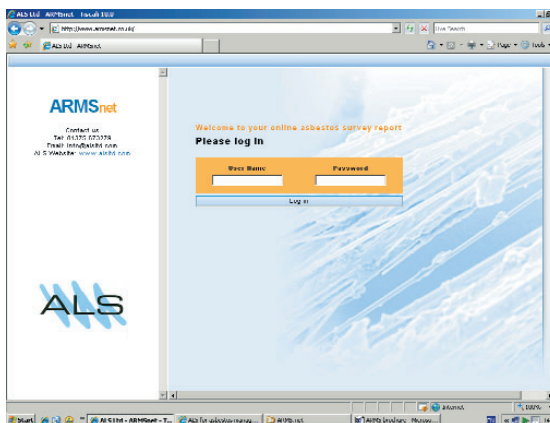
ARMS will automatically log this new re-inspection data, creating an archive file showing historical inspections and changes to the ACMs state throughout the life of its management.



ARMSnet

If, like some of our clients, you want to harness the latest technology in accessing services directly over the internet, then ARMSnet is your solution.

Fast, efficient and simple to use, ARMSnet puts asbestos register information directly where it's most needed, using nothing more complicated than an internet connection.



Utilising all the trusted functions of ARMS and the flexibility of PDF format drawings and reports, ARMSnet has fast become the future of online asbestos registers.



Asbestos Management Consultancy

Supporting UK Businesses



Asbestos Management Consultancy

Asbestos is heavily regulated by legislation - primarily by the Control of Asbestos Regulations 2006 ("CAR 2006"). The HSE has recognised the risk of exposure to asbestos and since May 2004 has made it a legal duty to assess and manage the risk of asbestos in buildings. It is essential to know the location and condition of asbestos within buildings, to maintain written records, to document actions and to have a management system and procedures in place to avoid exposure to asbestos fibres.

It's estimated that 85% of buildings within the UK still have significant quantities of asbestos containing materials. The number of asbestos related deaths continues to rise in the UK.

If you are the owner or have maintenance responsibilities for a building you are legally the "duty holder" and must ensure that an Asbestos Risk Assessment survey has been carried out by a competent person.

ALS was one of the first companies to be accredited by UKAS for asbestos testing and inspection. We have and maintain all current accreditations available. ALS holds a supervisory asbestos license.

ALS can undertake Asbestos Risk Assessment surveys and carry out sampling at any domestic, commercial or industrial premises. We provide a comprehensive project management service right through to single sample identification. ALS also offers asbestos training ranging from general awareness to British Occupational Hygiene Society Proficiency Modules.

- Project management
- Surveys and risk assessments
- Air monitoring
- On-site supervision of asbestos removal
- Analysis of bulk materials
- Development of policy and procedures
- Contract administration
- Production of work specification
- Asbestos Register Management System (ARMS)
- ARMSnet
- Expert witness
- Training

How we work and who works for us

Although our work is of a serious nature you will find us a friendly and flexible organisation, we're also competitive on price. We work with and nurture businesses and institutions, large and small, building up lasting friendships both across the UK and internationally. These relationships have developed into long term placements with clients for key staff.

Our experience, continuing professional development and wide range of consultancy contribute to our first-rate reputation for providing a cost-effective and practical approach to health and safety.

Asbestos Surveying

The CAR 2006 introduced Regulation 4, the explicit duty to manage asbestos in non-domestic premises. This important legislation tackles the biggest occupational health killer in the U.K. – asbestos related disease.

Of the number of people currently dying each year of asbestos related diseases, 25% have once worked in the building and maintenance trades and often would have worked unknowingly on, or near to, asbestos containing materials (ACMs). The requirements of the duty to manage seek to prevent further unknowing exposure to asbestos by building and maintenance workers.

The duty holder is responsible for the safe management of asbestos containing materials within such premises. In order to enable him to manage the risk from the asbestos, the duty holder shall ensure that a suitable and sufficient assessment is carried out as to whether asbestos is or is liable to be present in the premises.

The duty holder's responsibilities:

The duty to manage requires those in control of premises to:

Take reasonable steps to determine the location and condition of materials likely to contain asbestos

Presume materials contain asbestos unless there is strong evidence that they do not

Make and keep an up-to-date record of the location and condition of the ACMs or presumed ACMs in the premises

Assess the risk of the likelihood of anyone being exposed to fibres from these materials

Prepare a plan setting out how the risks from the materials are to be managed

Take the necessary steps to put the plan into action

Review and monitor the plan periodically

Provide information on the location and condition of the materials to anyone who is liable to work on or disturb them

Complying with these regulations means the completion of an asbestos survey. By carrying out an asbestos survey, a risk assessment can then be produced providing the first part of the management plan and working towards the prevention or reduction of exposure to asbestos.

ALS is accredited by UKAS in compliance with ISO 17020 as an Inspection Body to carry out asbestos surveys in accordance with MDHS 100 "Surveying, sampling and assessment of asbestos-containing materials".

ALS can undertake three types of survey.

Type 1 – Location and assessment survey (presumptive survey)

Type 2 – Standard sampling, identification and assessment survey (sampling survey)

Type 3 - Full access sampling and identification survey (pre-demolition/major refurbishment survey)

All ALS survey information is collected on handheld computers and presented in the form of an asbestos register database which fully complies with the CAR 2006 and, more importantly, the ACMs are managed successfully therefore reducing exposure and potential death.

Asbestos Testing Service

ALS has been UKAS accredited for the identification of asbestos in material samples since 1987. All of the asbestos identification performed by ALS is carried out by our team of experts all of whom are qualified to BOHS P401: Identification of asbestos in bulk samples.

Samples are analysed using polarised light microscopy as defined in HSE document HSG248 "Asbestos: The analysts' guide for sampling, analysis and clearance procedures".

ALS can provide a rapid turnaround of results whilst ensuring that their accuracy is not compromised.

Additional services

In addition to our asbestos testing service, we can provide competent consultants to take samples, saving you the worry of handling and transporting asbestos containing materials.

Air Monitoring

ALS holds UKAS accreditation for asbestos air sampling and fibre counting and the 4-stage clearance/certificate of reoccupation.

Our experienced team of analysts are able to offer total piece of mind that asbestos removal works are carried out to the highest possible standards, with initial site audits, supervision during works, air monitoring, thorough visual inspection and clearance air monitoring.

Site-specific testing strategies are formulated to meet the requirements of each project and samples are analysed on-site in accordance with HSG248 "Asbestos: The analysts' guide for sampling, analysis and clearance procedures".

Our analysts can issue a Certificate of Reoccupation in accordance with Regulation 19 of the CAR 2006 on completion of removal works.

